

DOCUMENTATION  
MEATY BEATY BIG AND BOUNCY  
AT THE  
ALDRICH CONTEMPORARY ART MUSEUM  
RIDGEFIELD, CT  
2013



## Frottage In Dreamtime, 2013

48L x 25W x 37H  
polyethylene buckets, rigid foam, urethane resin,  
zebrawood planks, oil-based varathane,  
modeling clay, clamp, plexiglass, epoxy,  
acrylic sheeting

Photography by Sean Dungan Studio, LA

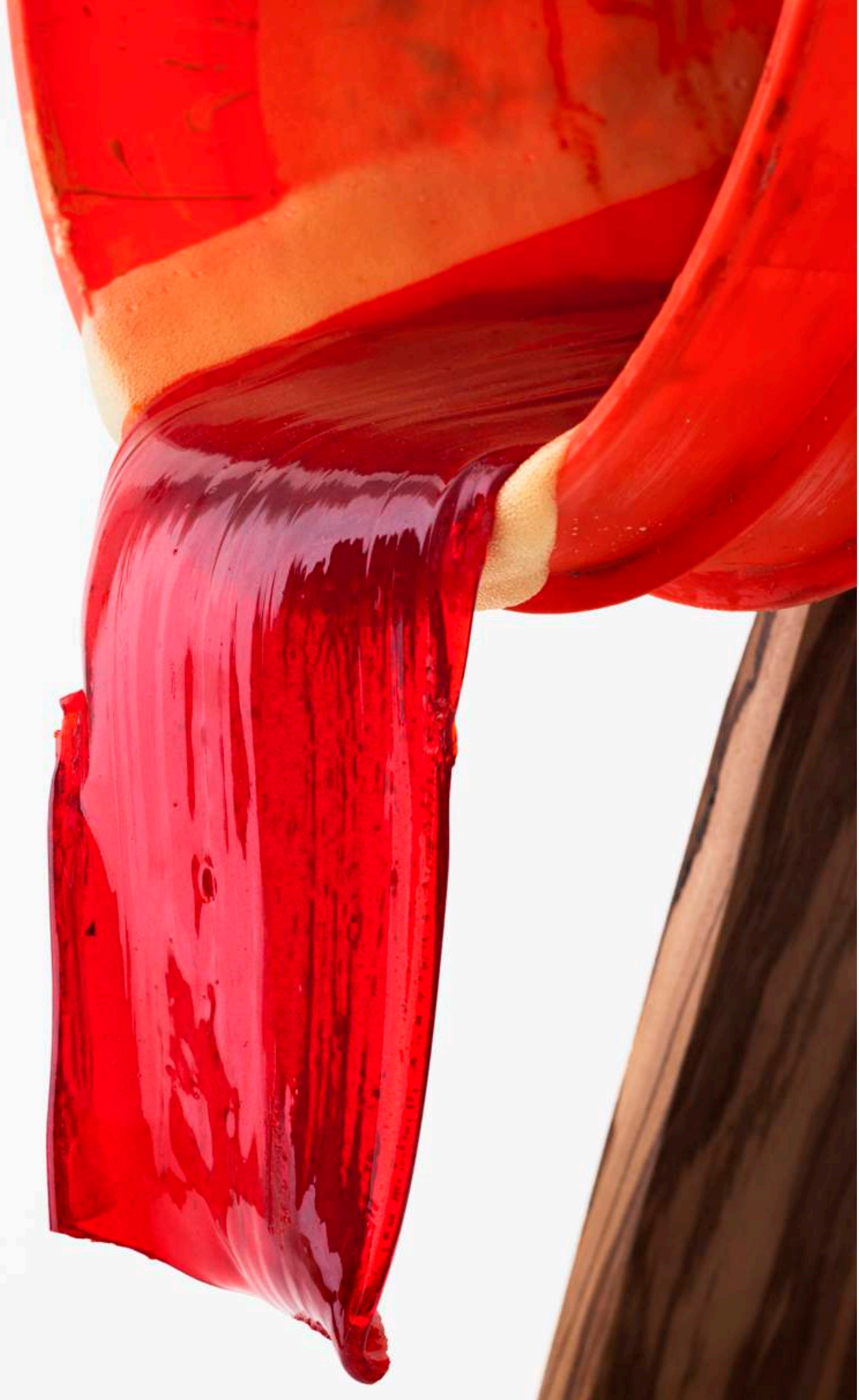
## Frottage In Dreamtime, 2013

48L x 25W x 37H

polyethylene buckets, rigid foam, urethane resin,  
zebrawood planks, oil-based varathane,  
modeling clay, clamp, plexiglass, epoxy,  
acrylic sheeting

Photography by Sean Dungan Studio, LA









Meaty Beaty Installation, Aldrich Museum, 2013



Meaty Beaty Installation, Aldrich Museum, 2013



Meaty Beaty Installation, Aldrich Museum, 2013



## The Thing Which Is Being Eaten, Eats Back

2013

37H x 12W x 14L

cast aluminum, urethane resin, rope, socks, sand, foam, string,  
ping pong balls, squash balls, cardboard, wood, spray paint, tape



















## The Thing Which Is Being Eaten, Eats Back

2013

37H x 12W x 14L

cast aluminum, urethane resin, rope, socks, sand, foam, string,  
ping pong balls, squash balls, cardboard, wood, spray paint, tape



It Is The Fact That I Am Oriented Toward  
The 'Not Me'  
That Allows Me To Do This Or To Do That

2013  
41L x 21W x 55H  
everlast "heavy" bag, rigid foam, sand, latex paint, fir planks,  
nails, urethane resin, screws, gasket, glue, eucalyptus limb

Photography by Sean Dungan Studio, LA







It Is The Fact That I Am Oriented Toward The 'Not Me'  
That Allows Me To Do This Or To Do That

2013

41L x 21W x 55H

everlast "heavy" bag, rigid foam, sand, latex paint, fir planks,  
nails, urethane resin, screws, gasket, glue, eucalyptus limb

Photography by Sean Dungan Studio, LA















## What Do Foreshortening and Amputation Have In Common?

2012

36L x 14W x 26H

Concrete, stumps, tarp, urethane resin, paint, polyethylene tarp, woodstain

Photography by Sean Dungan Studio, LA







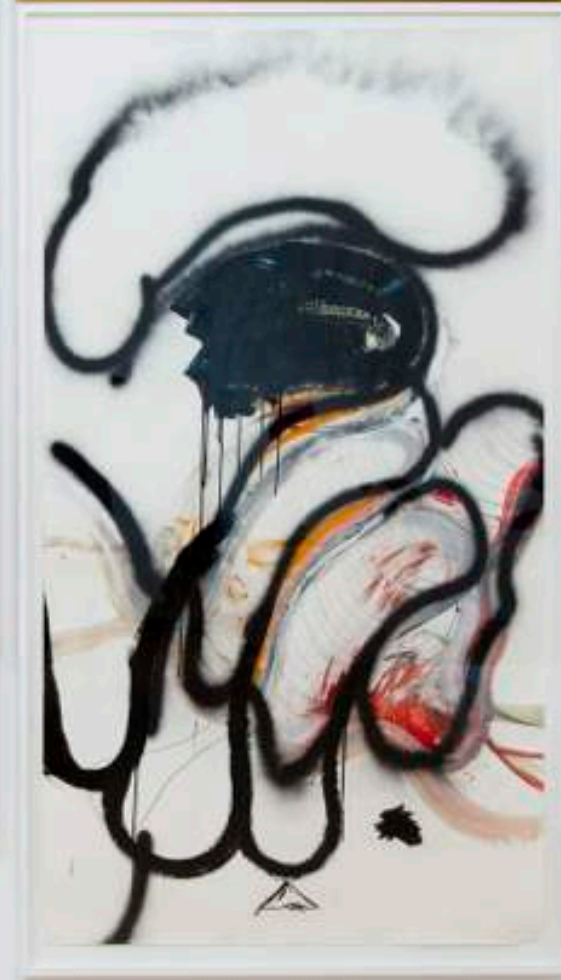
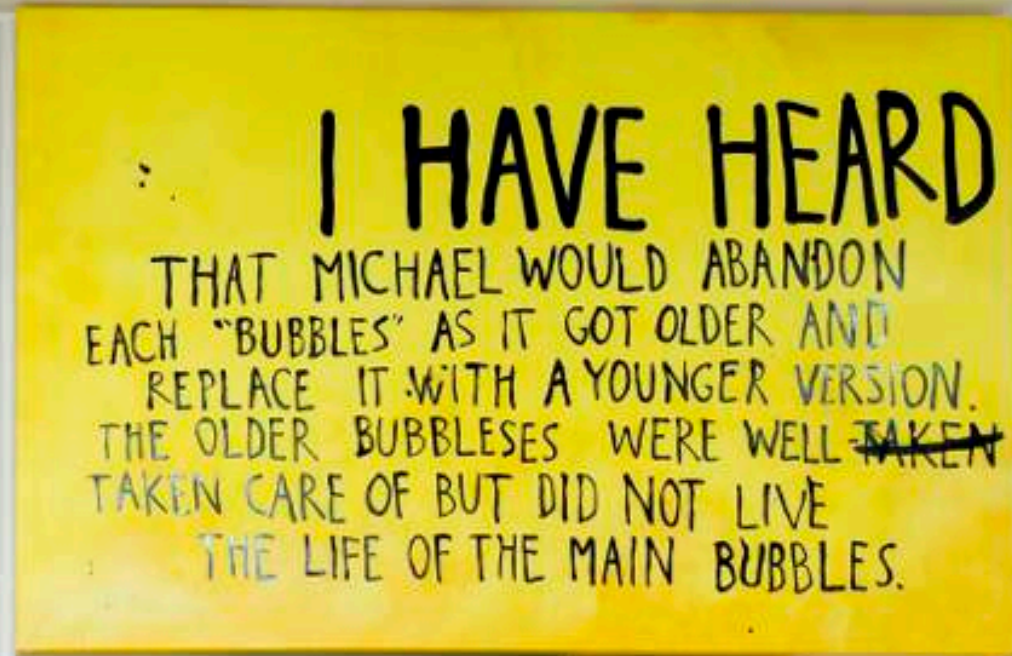
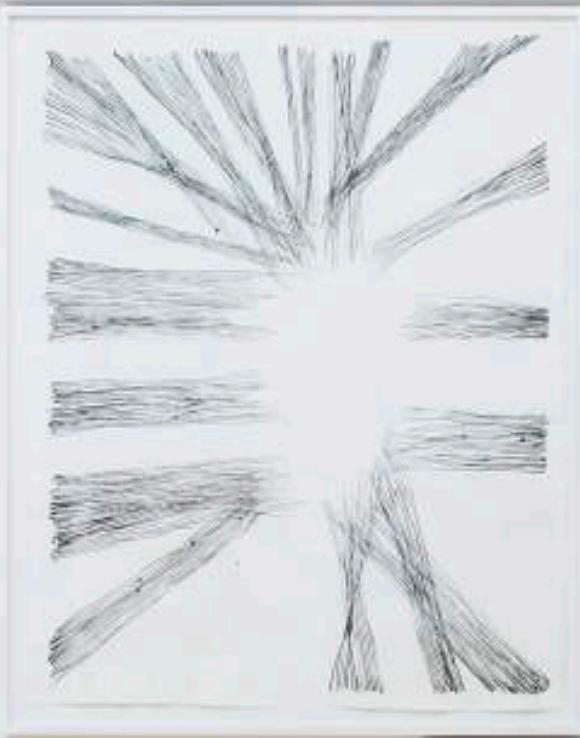
Meaty Beaty Installation, Aldrich Museum, 2013





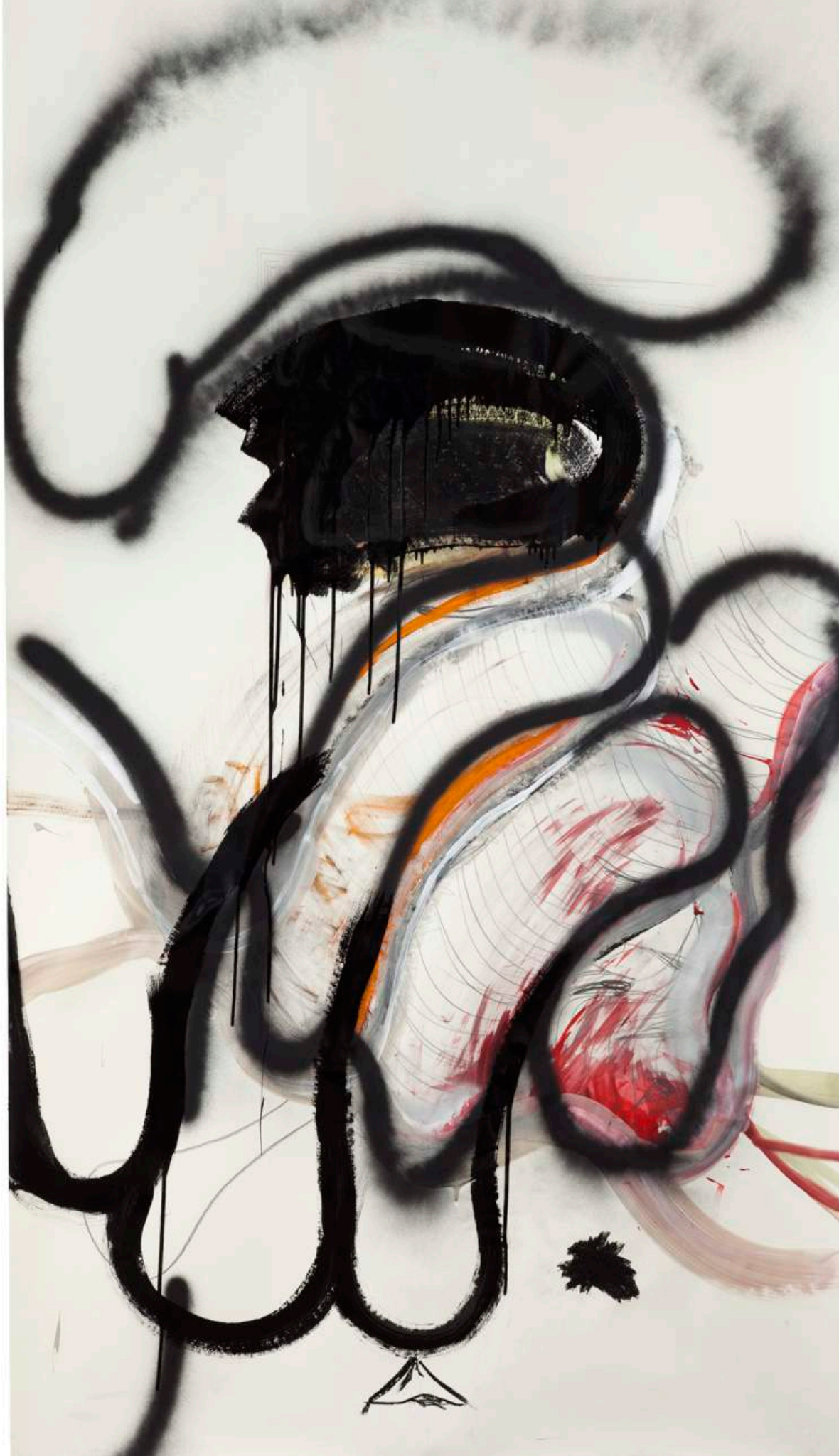
Meaty Beaty Installation, Aldrich Museum, 2013





Meaty Beaty Installation, Aldrich Museum, 2013





Quanta,  
2013  
42" x 77"

spray paint, urethane alkyd paint,  
ink, charcoal, gouache, graphite on paper

Photography by Sean Dungan Studio, LA









## The Unrepresentable

2013

73" x 42"

conte crayon on paper





The Unrepresentable  
2013  
73" x 42"  
conte crayon on paper

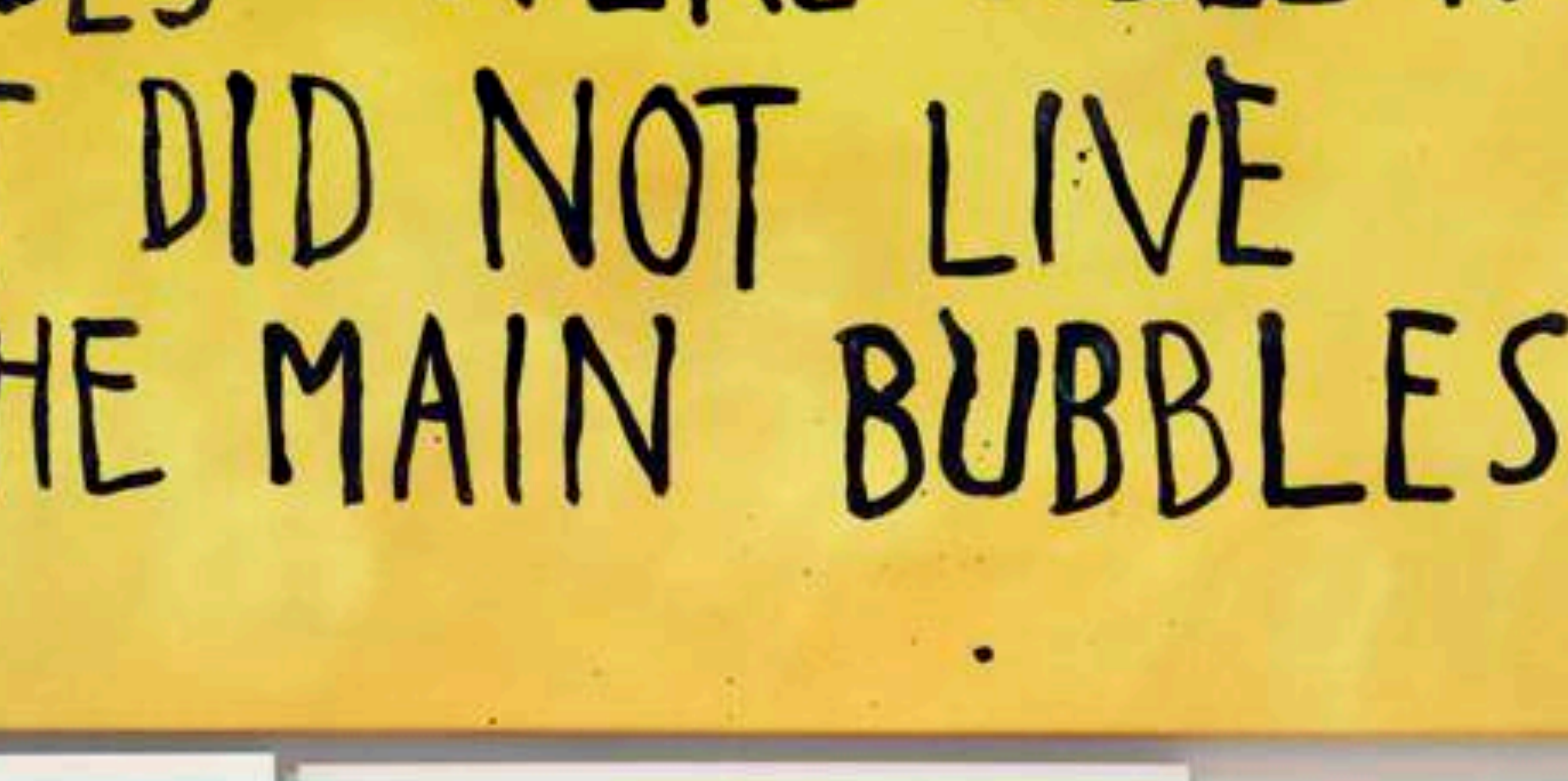


I HAVE HEARD  
THAT MICHAEL WOULD ABANDON  
EACH "BUBBLES" AS IT GOT OLDER AND  
REPLACE IT WITH A YOUNGER VERSION.  
THE OLDER BUBBLESES WERE WELL ~~TAKEN~~  
TAKEN CARE OF BUT DID NOT LIVE  
THE LIFE OF THE MAIN BUBBLES.

The Life of the Main Bubbles

2013  
84" x 54"  
gesso, spray paint, sign paint, on canvas





The Life of the Main Bubbles

2013

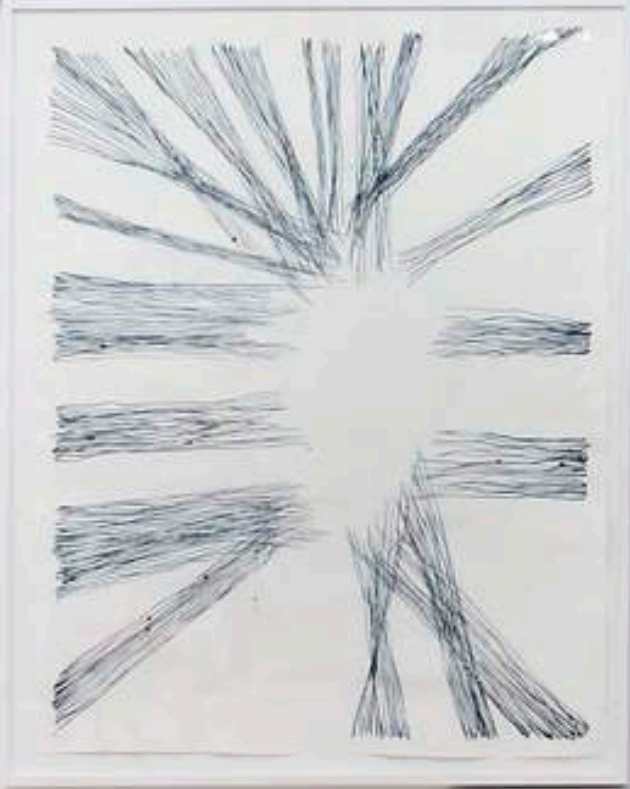
84" x 54"

gesso, spray paint, sign paint, on canvas



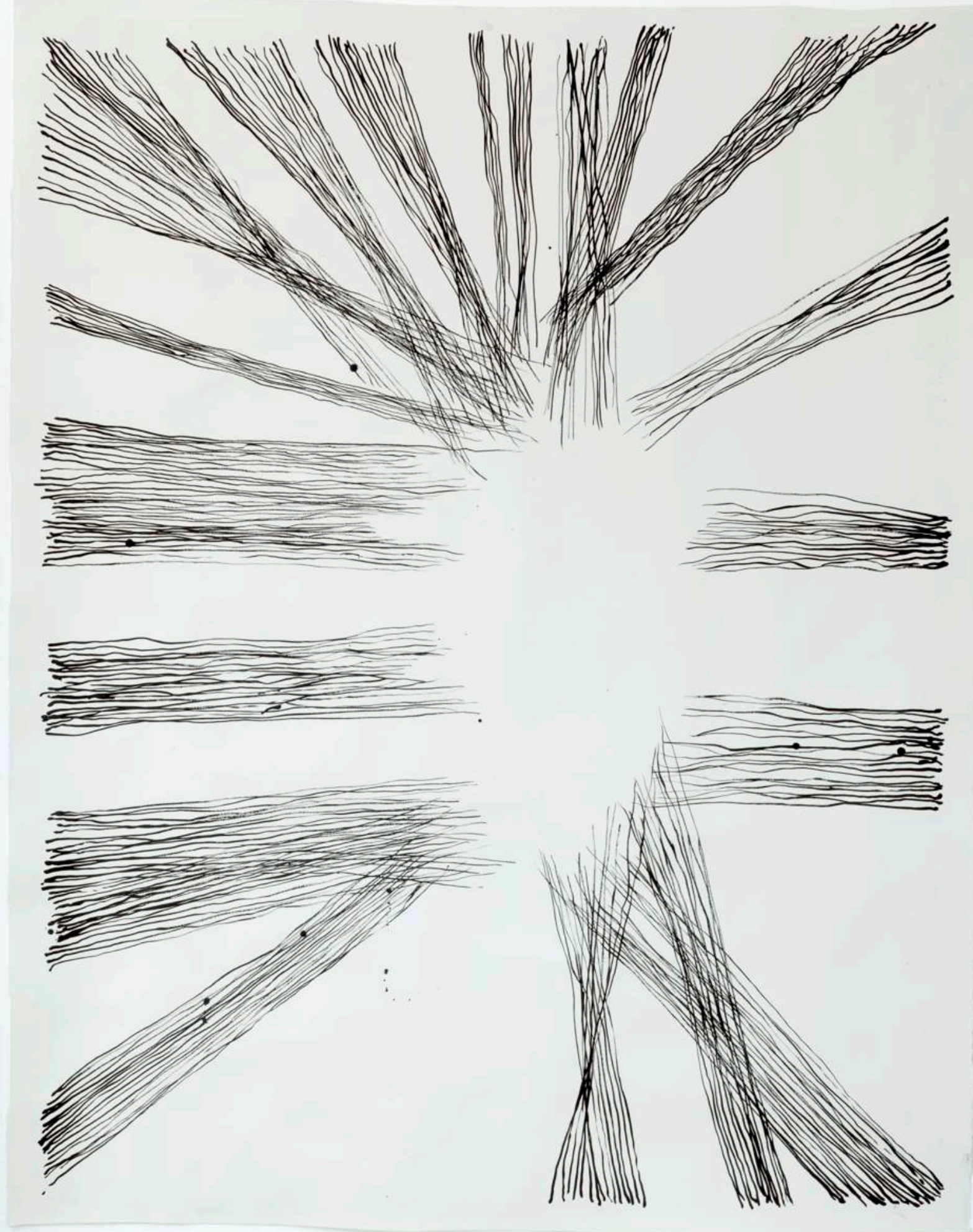


I HAVE HEARD  
THAT MICHAEL WOULD ABANDON  
EACH "BUBBLES" AS IT GOT OLDER AND  
REPLACE IT WITH A YOUNGER VERSION.  
THE OLDER BUBBLES WERE WELL ~~TAKEN~~  
TAKEN CARE OF BUT DID NOT LIVE  
THE LIFE OF THE MAIN BUBBLES.



Meaty Beaty Installation, Aldrich Museum, 2013





## Flesh

2013  
44" x 56"  
ink on watercolor paper

Photography by Sean Dungan Studio, LA









Black Ghost (Double Negative Contains More Information than a Positive)  
2013, 14" x 17", gouache, ink on bristol board

Solar Anus (Triple Black Outline)

2013  
9" x 12"  
gouache on paper





Proposal for Community Coherence  
(Solo Workaround)

2012  
11" x 14"  
ink on paper



THE ONLY ANTIDOTE TO  
MENTAL SUFFERING IS  
PHYSICAL PAIN









Meaty Beaty Installation, Aldrich Museum, 2013







## Night Goat

2013

31L x 27W x 39H

silicone flexible foam, concrete, epoxy, glue, fir  
dowels, urethane resin, urethane alkyd gloss paint

Photography by Sean Dungan Studio, LA





## Night Goat

2013

31L x 27W x 39H

silicone flexible foam, concrete, epoxy, glue, fir  
dowels, urethane resin, urethane alkyd gloss paint

Photography by Sean Dungan Studio, LA

## The Presentiments (Of Okay Animals)

2013

21H x 14L x 12W

cast aluminum, polyethylene nailbox, urethane resin,  
oil-based paint, threaded steel bolt, wood





## The Presentiments (Of Okay Animals)

2013

21H x 14L x 12W

cast aluminum, polyethylene nail box, urethane resin,  
oil-based paint, threaded steel bolt, wood



# Everything Shouts Together

2013

50L x 11W x 46H

red sock, plywood, fir dowel, steel pipe, galvanized flange,  
screws, spray paint, wood, latex, urethane resin, concrete, latex paint

Photography by Sean Dungan Studio, LA















## Everything Shouts Together

2013

50L x 11W x 46H

red sock, plywood, fir dowel, steel pipe, galvanized flange,  
screws, spray paint, wood, latex, urethane resin, concrete, latex paint

Photography by Sean Dungan Studio, LA



## Distinction Is Perfect Continence

2013

37L x 12W x 30H

cowhide, waxed polyester thread, hot glue,  
silicone, plexiglass, steel threaded bolts,  
pine, polyester batting, cotton batting,  
kneadable epoxy

Photography by Sean Dungan Studio, LA





## Distinction Is Perfect Contenance

2013

37L x 12W x 30H

cowhide, waxed polyester thread, hot glue,  
silicone, plexiglass, steel threaded bolts,  
pine, polyester batting, cotton batting,  
kneadable epoxy

Photography by Sean Dungan Studio, LA

## Several Thoughts on Energy Conditions and Wormholes

2012

36H x 25W x 10L

felt, string, latex, resin, polyethylene bucket,  
foam, oil-based paint, galvanized pipe, concrete

Photography by Sean Dungan Studio, LA





## Several Thoughts on Energy Conditions and Wormholes

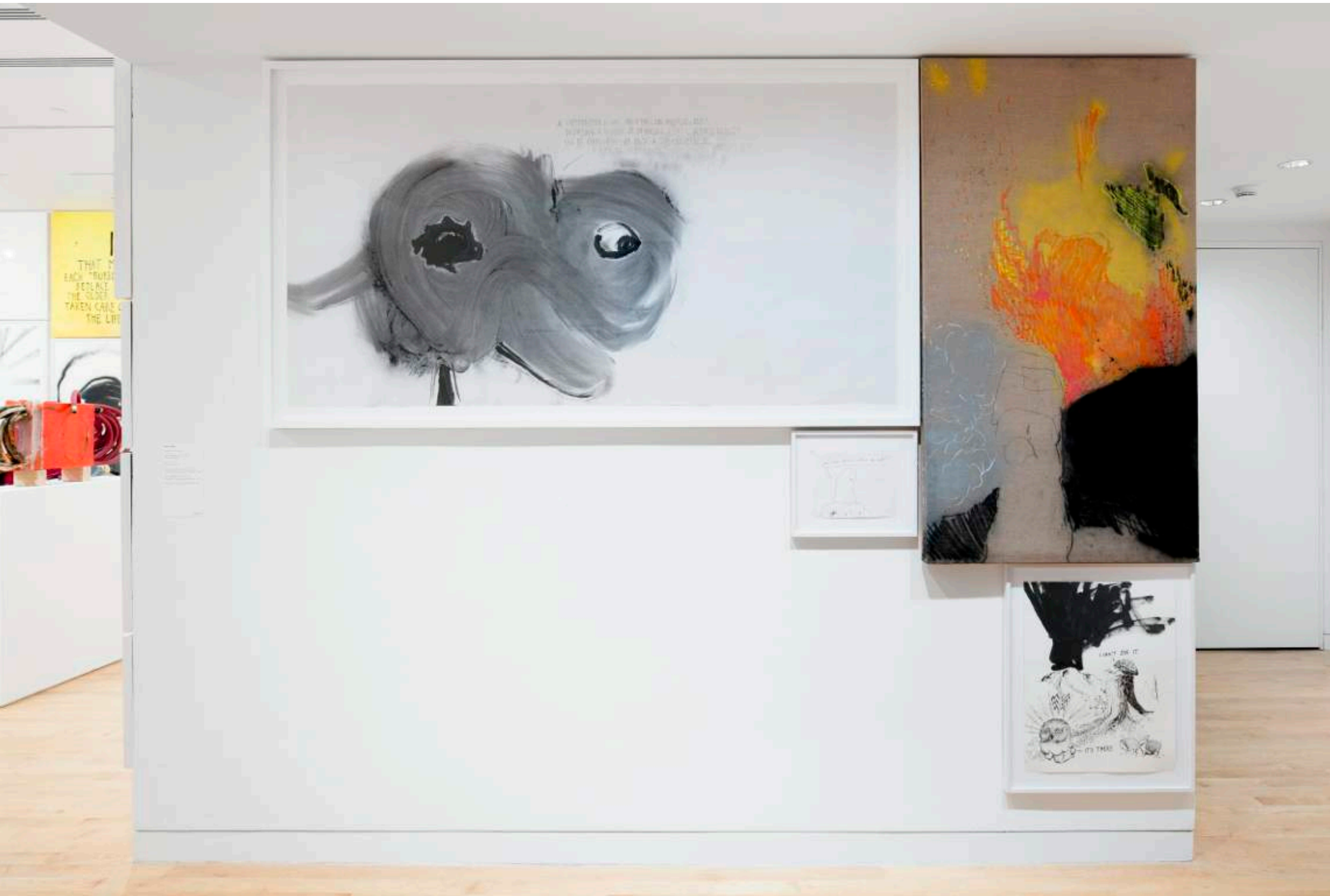
2012

36H x 25W x 10L

felt, string, latex, resin, polyethylene bucket,  
foam, oil-based paint, galvanized pipe, concrete

Photography by Sean Dungan Studio, LA





Meaty Beaty Installation, Aldrich Museum, 2013





Superposition (Everywhere At Once)

2013  
77" x 41"  
charcoal, urethane paint, gouache on paper

A SUPERPOSITION IS NOT GOOD IN THAT THE QUANTUM OBJECT  
OCCUPYING A NUMBER OF DIFFERENT STATES SIMULTANEOUSLY  
CAN BE EVERYWHERE AT ONCE. A SUPERPOSITION IS  
A KIND OF INFINITUDE.





# Superposition (Everywhere At Once)

2013

77" x 41"

charcoal, urethane paint, gouache on paper





The Volcanologist is Missing

2013  
36" x 64"  
oil pastel, charcoal, graphite, spray paint on linen











Untitled (Invisible Volcano)

2004  
19" x 24"  
ink on bristol board

Photography by Sean Dungan Studio, LA



I CAN'T SEE IT.

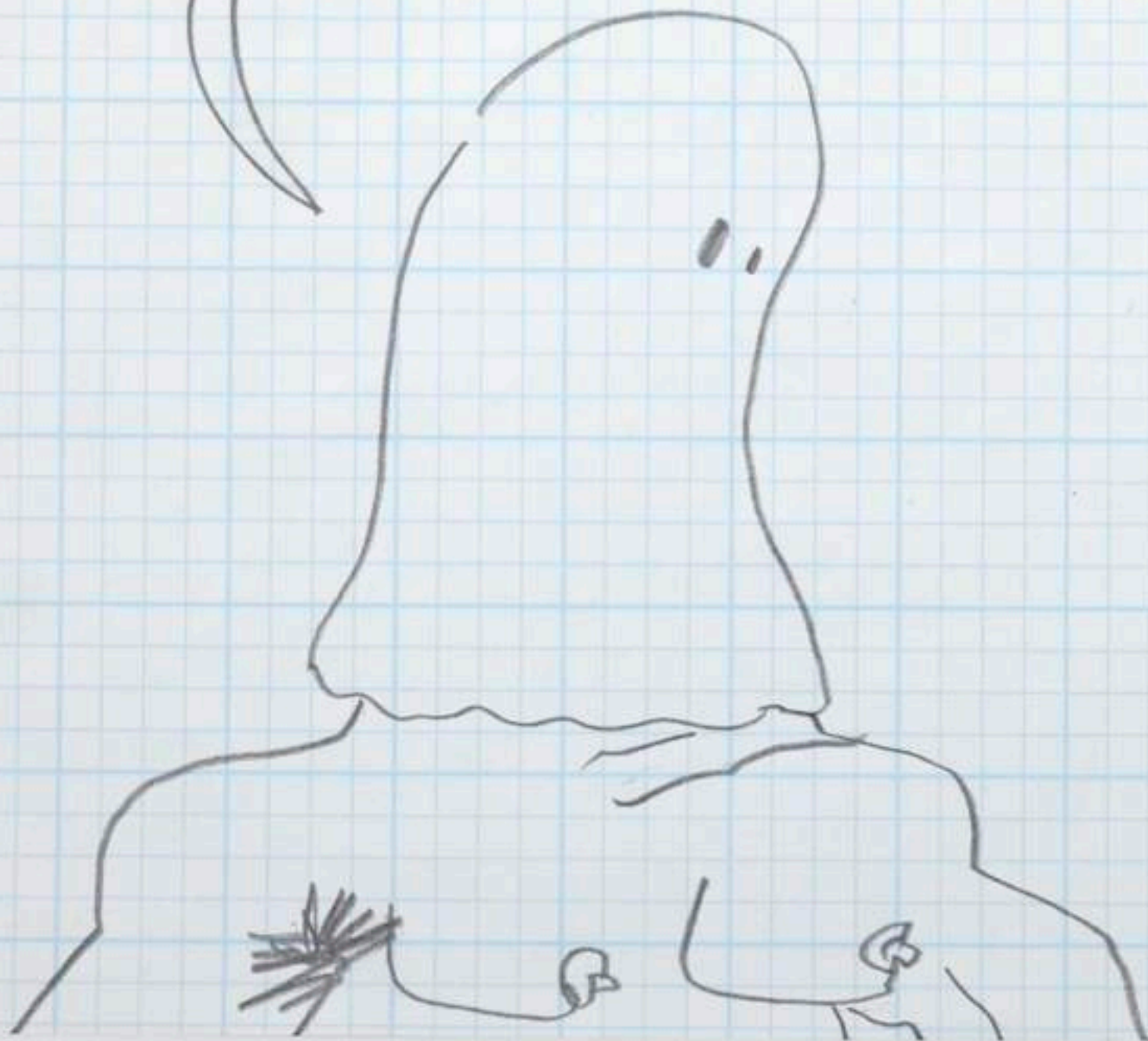


— IT'S THERE.





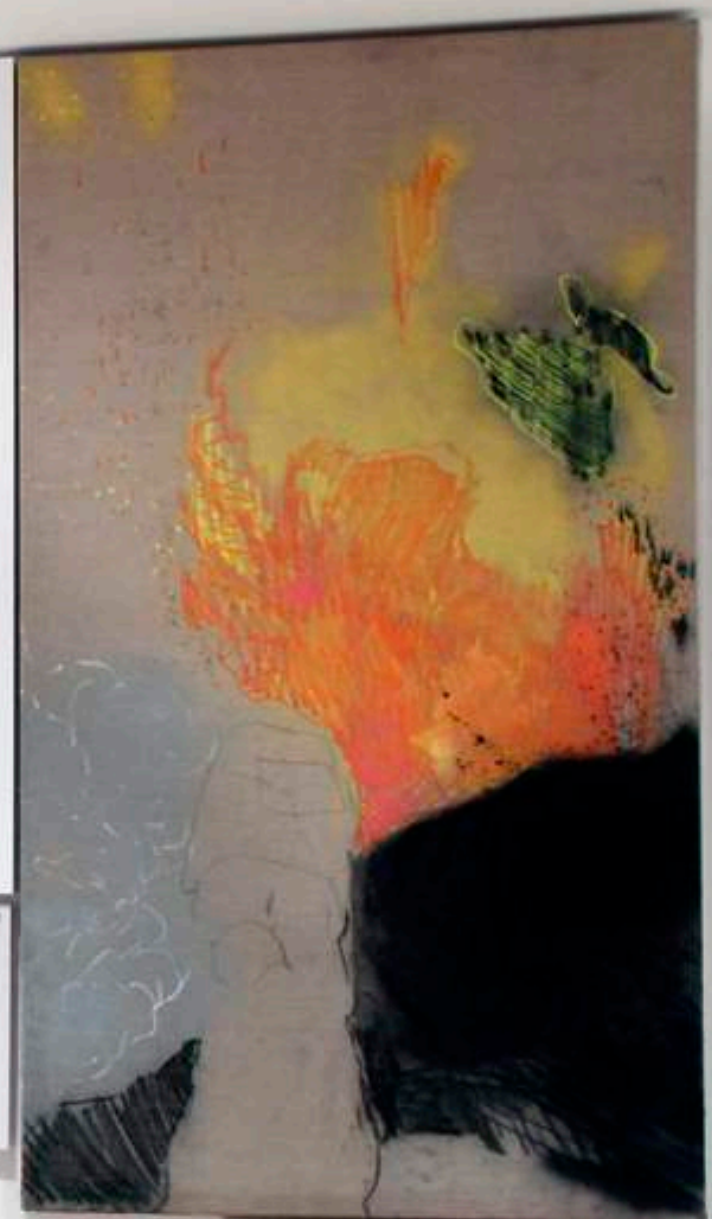
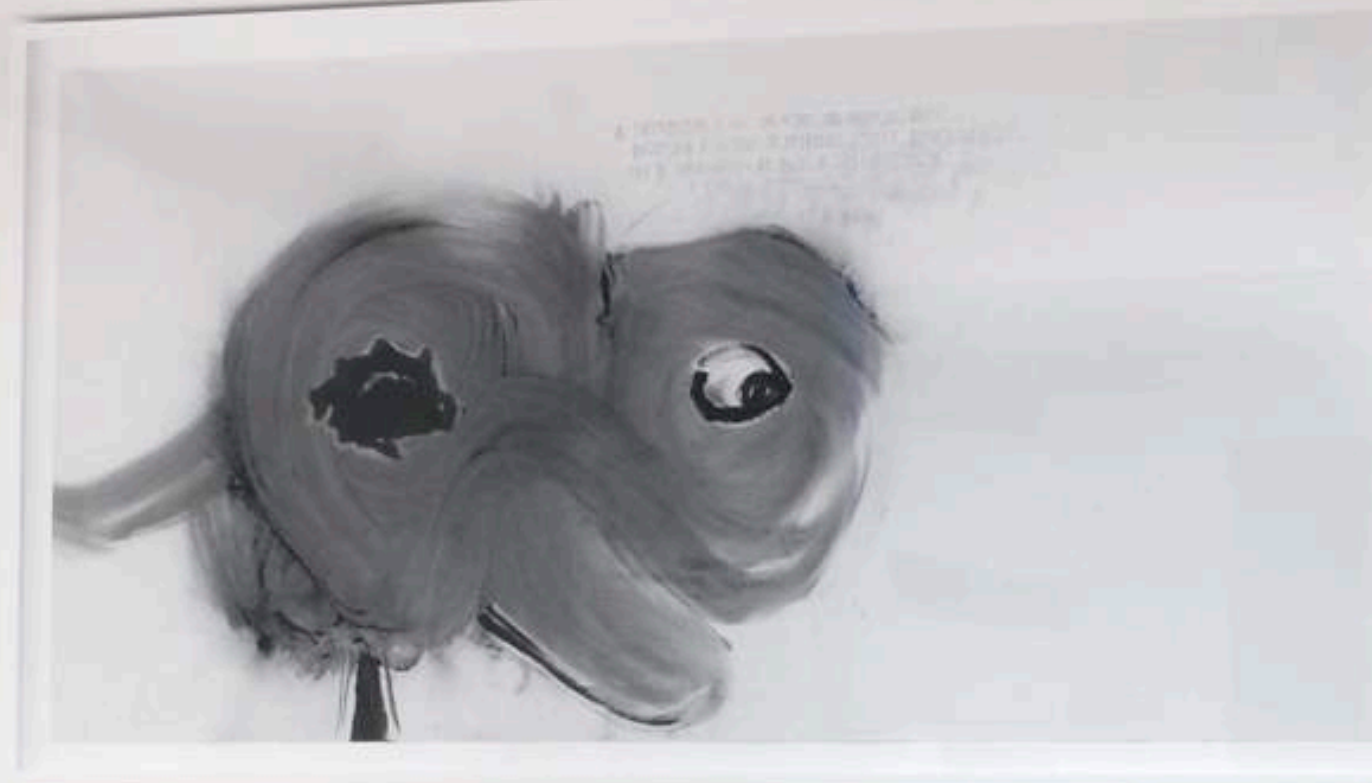
you know there's a slot on top right?



Slot on Top

2013  
11" x 8.5"  
graphite on paper





Meaty Beaty Installation, Aldrich Museum, 2013



Meaty Beaty Installation, Aldrich Museum, 2013





Meaty Beaty Installation, Aldrich Museum, 2013



Meaty Beaty Installation, Aldrich Museum, 2013

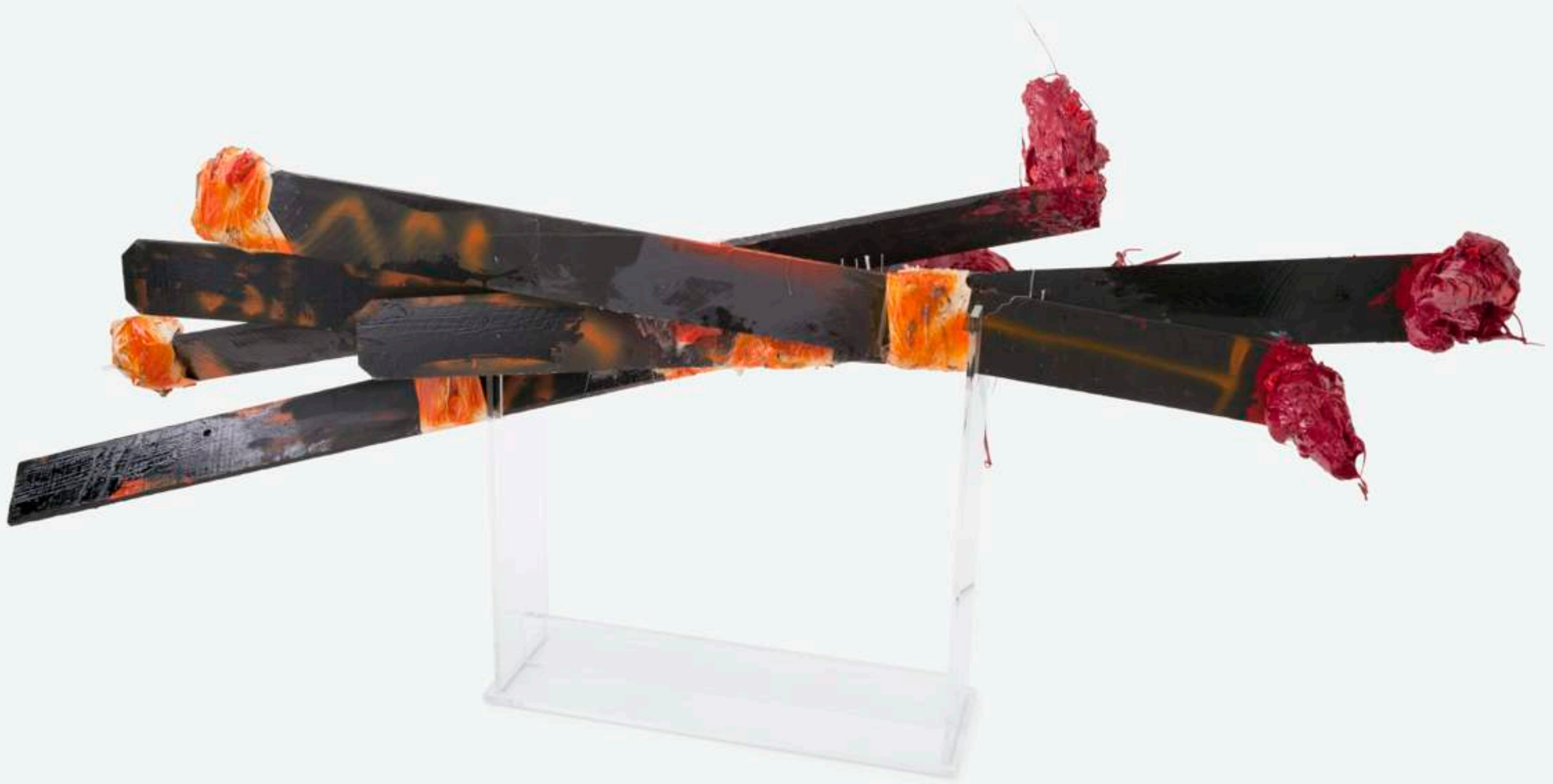






Meaty Beaty Installation, Aldrich Museum, 2013





## Spread Eagle at the Hawk Hotel

2013

91L x 43H x 36W

wood, paint, duct tape, urethane resin, hydro-stone, plexiglass

Photography by Sean Dungan Studio, LA



Spread Eagle at the Hawk Hotel

2013  
91L x 43H x 36W  
wood, paint, duct tape, urethane resin, hydro-stone, plexiglass  
Photography by Sean Dungan Studio, LA











# Spread Eagle at the Hawk Hotel

2013

91L x 43H x 36W

wood, paint, duct tape, urethane resin, hydro-stone, plexiglass







## Supernumerary Phantom Limbs and The Comedy of Reciprocal Interference

2013  
24L x 15W x 24H  
Skateboard (Wood, Paint, Grip tape, Aluminum,  
Urethane Wheels), Urethane Resin, Steel Pipe,  
Galvanized Flange, Screws, Hydro-stone

Photography by Sean Dungan Studio, LA

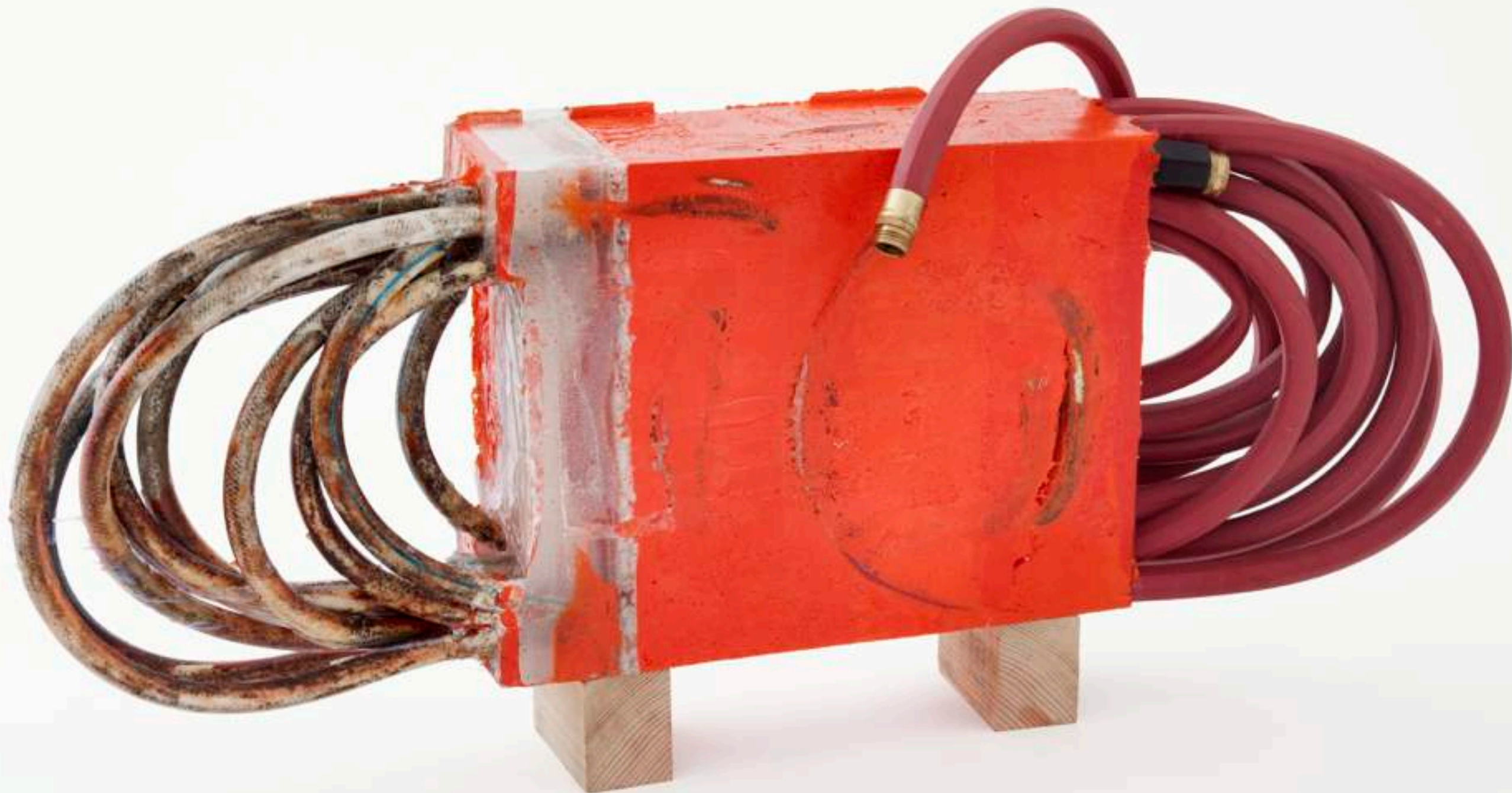




## Supernumerary Phantom Limbs and The Comedy of Reciprocal Interference

2013  
24L x 15W x 24H  
Skateboard (Wood, Paint, Grip tape, Aluminum,  
Urethane Wheels), Urethane Resin, Steel Pipe,  
Galvanized Flange, Screws, Hydro-stone

Photography by Sean Dungan Studio, LA



## The Imperfective

2013  
42L x 7W x 18H  
garden hoses, urethane resin

Photography by Sean Dungan Studio, LA



## The Imperfective

2013  
42L x 7W x 18H  
garden hoses, urethane resin

Photography by Sean Dungan Studio, LA





## The Imperfective

2013  
42L x 7W x 18H  
garden hoses, urethane resin

Photography by Sean Dungan Studio, LA







Meaty Beaty Installation, Aldrich Museum, 2013



Meaty Beaty Installation, Aldrich Museum, 2013





## Miasma (Prequel)

2013  
44.5" x 17"  
spray paint, graphite, latex paint on paper

Photography by Sean Dungan Studio, LA

## The Imminent Legibility of This Non-Productive Excess

2013

42" x 77"

charcoal, graphite, gouache on paper

Photography by Sean Dungan Studio, LA







## Occult Wiener (On a String)

2003  
18" x 24"  
ink and acrylic paint on paper

Photography by Sean Dungan Studio, LA



Will The Illusion Never End?

2004  
red ink on paper  
8.5" x 11"



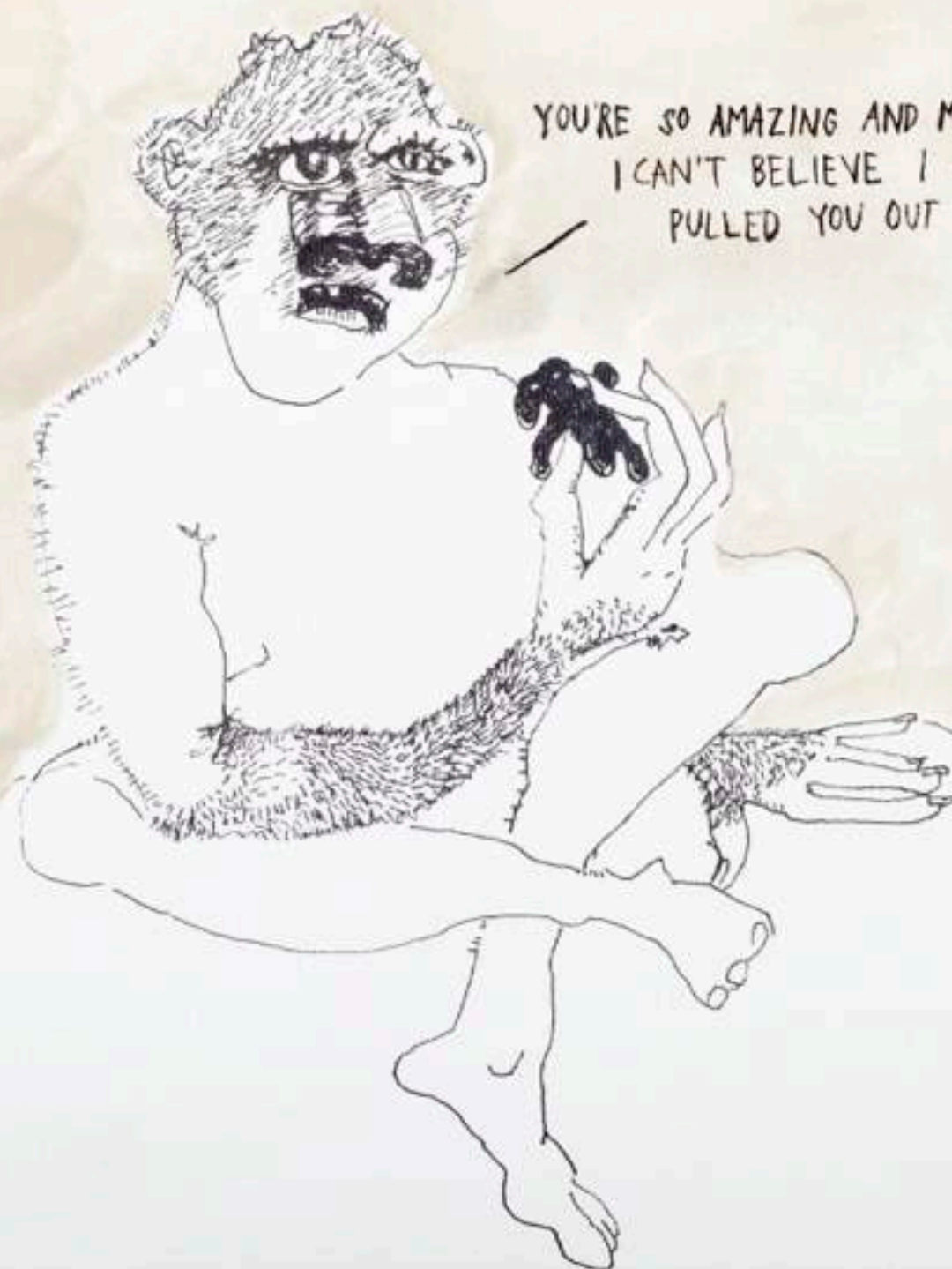


## Miasma (Sequel)

2013

34" x 14"

spray paint, ink, gouache on bristol board



Misshapen Homunculus

2013  
24" x 18"  
gouache and ink on canvas





Protuberance (Violet with Divider)

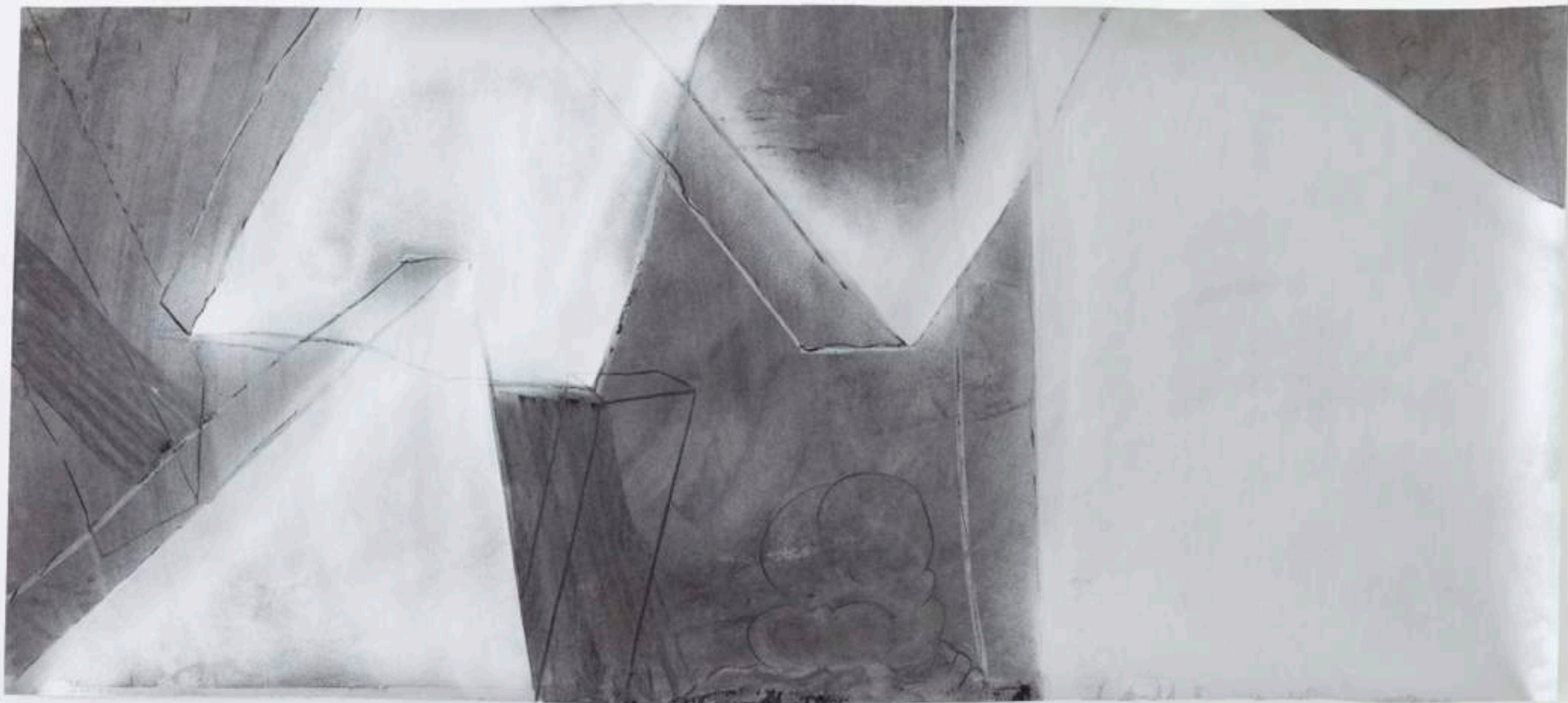
2013  
9" x 12"  
gouache, acrylic on bristol board



## Faulty Premise

2013  
28" x 33.5"  
gouache on bristol board, gaffer tape

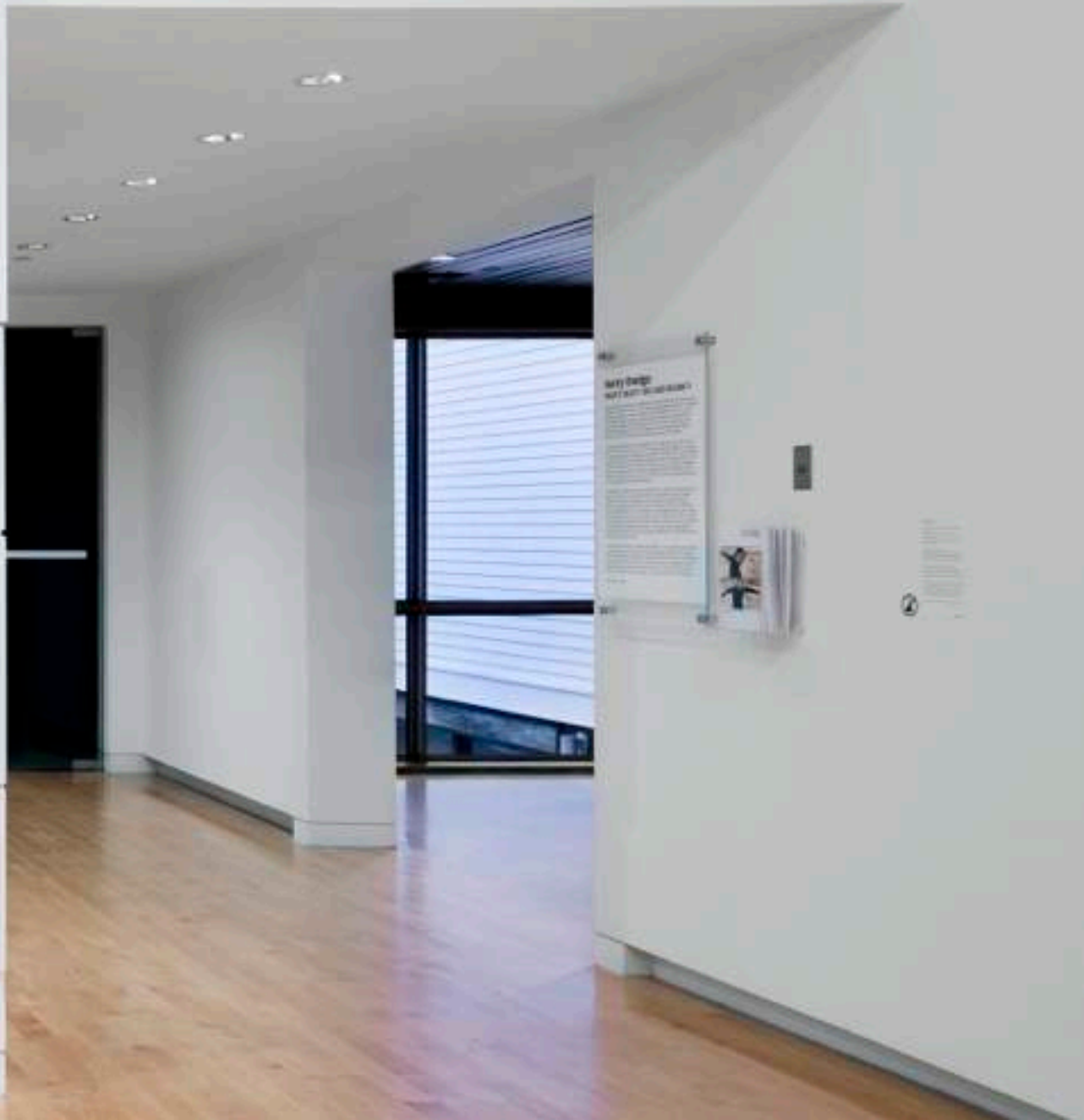
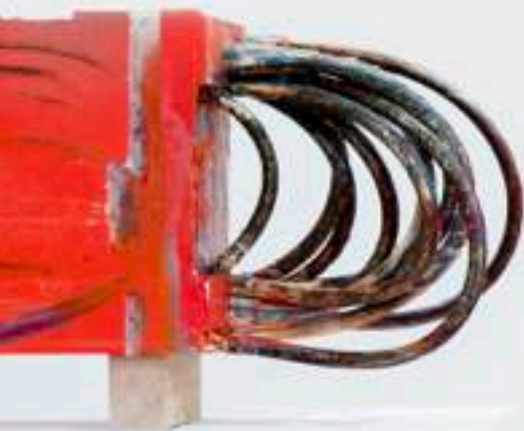
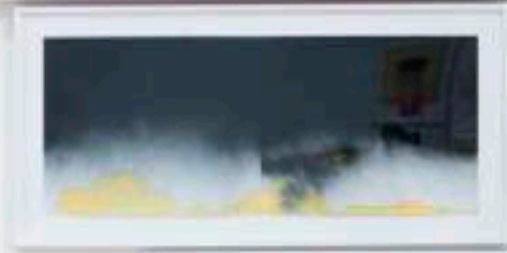




Silver Planar Landscape (Rectangle Speaks with a Cloud)

2013  
40" x 18"

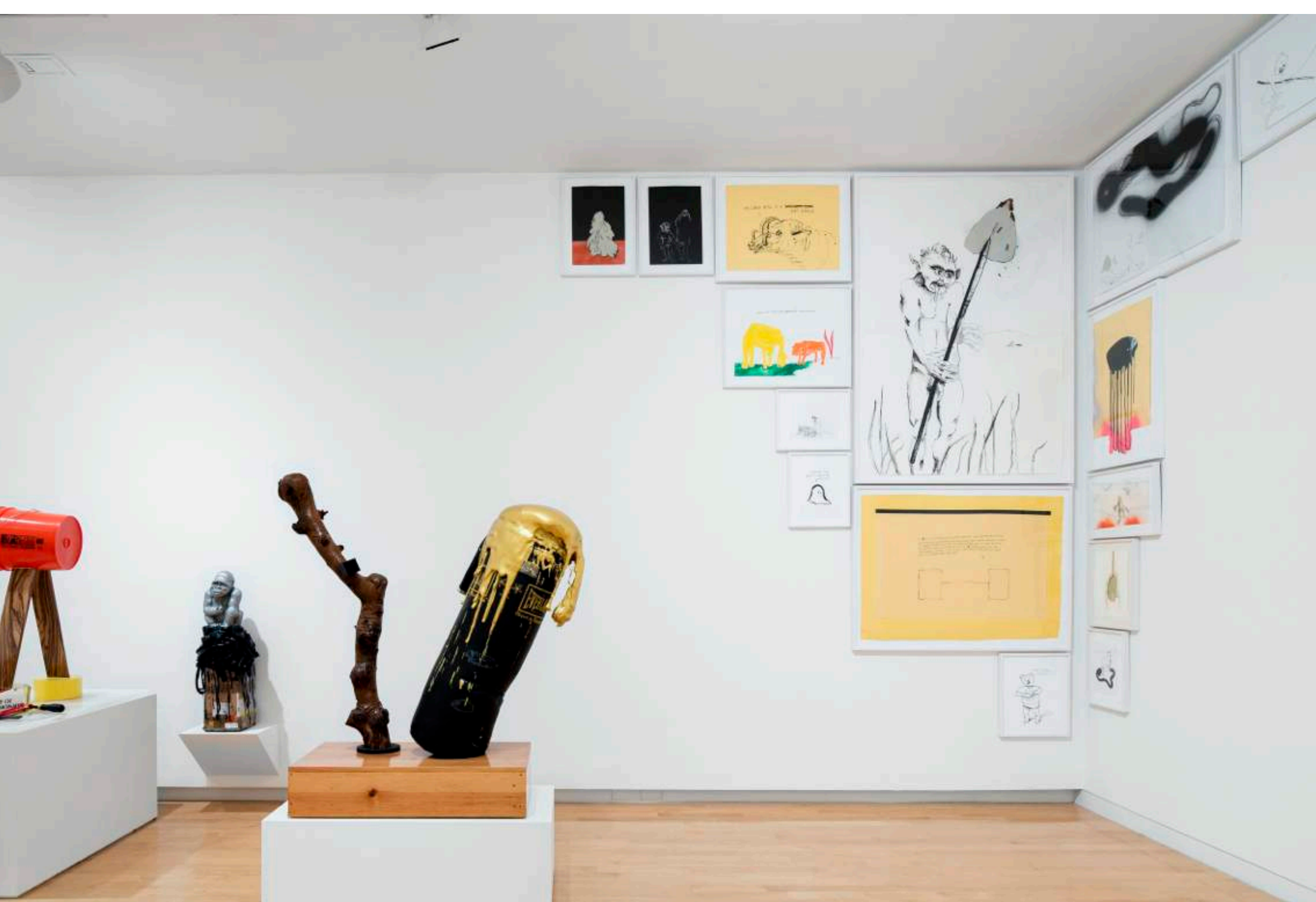
spray paint, graphite, charcoal on paper







Meaty Beaty Installation, Aldrich Museum, 2013



Meaty Beaty Installation, Aldrich Museum, 2013





Meaty Beaty Installation, Aldrich Museum, 2013

Mud Mound (Auburn Table)

2013  
12" x 18"  
gouache on paper





## Friend

2013  
12" x 18"  
gouache on paper



MY OTHER HEAD IS A ~~SPREADER BAR~~  
HOBO JUNGLE



Too-Muchness

2013, 25.5" x 20", ink on paper



NOW YOU SEE IT, NOW YOU DON'T, NOW YOU SEE IT, NOW YOU DON'T



Now You See It

2013, 24" x 18", oil pastel, ink, gouache on canvas



## Where Do You Want the Other Hole

2013  
45.5" x 66"  
gouache on watercolor paper

Photography by Sean Dungan Studio, LA





Stump fucker

2011  
11" x 8.5"  
pencil on paper





WITHOUT THIS  
SHEET I WOULD BE  
/ INVISIBLE.



Invisible

2012  
12" x 9"  
ink and acrylic paint on paper

IF A RACE LIKE THE HUMAN RACE WAS NOT ABLE TO BE BORN DIRECTLY FROM A NOBLE ANIMAL SPECIES, BUT ONLY  
FROM A SPECIES WHOSE ORIGIN WAS NOBLE BUT WHICH BECAME REPUGNANT TRASH IN RELATION TO THE TOTALITY OF MAMMALS,  
IT IS PERHAPS NOT VISIBLE TO LOOK AT THE SHIT-SMEARED AND OBSCENE ANUSES OF CERTAIN APES WITH THE  
USUAL DETACHMENT. THERE IS NO CHILD WHO HAS NOT AT ONE TIME OR ANOTHER ADMIRER, IN THIS, THESE  
FILTHY PROTUBERANCES, DAZZLINGLY COLORED EXPERIMENTAL SKULLS, SOMETIMES DAPPLED, GOING FROM SHOCKING  
PINK TO AN EXTRAORDINARY HORRIBLE, PEARLY VIOLET.



Shocking Pink to Horrible Violet

2013

46" x 32"

ink on tissue paper, spraypaint on paper, gaffer tape



IF ~~A~~ A RACE LIKE THE HUMAN RACE WAS NOT ABLE TO BE BORN DIRECTLY FROM A NOBLE ANIMAL SPECIES, BUT ONLY FROM A SPECIES WHOSE ORIGIN WAS NOBLE BUT WHICH BECAME REPUGNANT TRASH IN RELATION TO THE TOTALITY OF MAMMALS, IT IS PERHAPS NOT POSSIBLE TO LOOK AT THE SHIT-SMEARED AND OBSCENE ANUSES OF CERTAIN APES WITH THE USUAL DETACHMENT. THERE IS NO CHILD WHO HAS NOT AT ONE TIME OR ANOTHER ADMIRER, IN ZOOS, THESE FILTHY PROTUBERANCES, DAZZLINGLY COLORED EXCREMENTAL SKULLS, SOMETIMES DAPPLED, GOING FROM SHOCKING PINK TO AN EXTRAORDINARY HORRIBLE, PEARLY VIOLET.

Shocking Pink to Horrible Violet

2013

46" x 32"

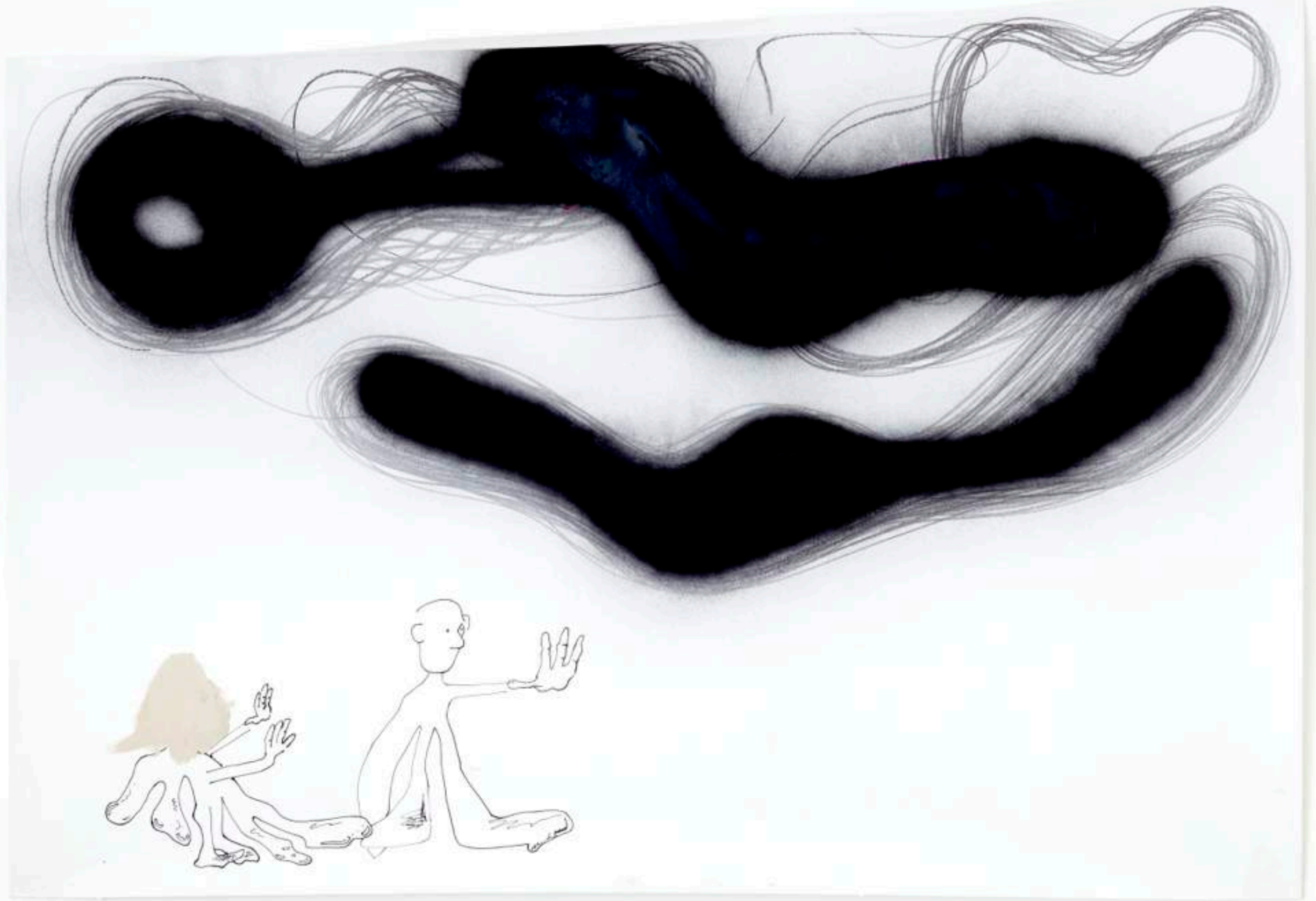
ink on tissue paper, spray paint on paper, gaffer tape



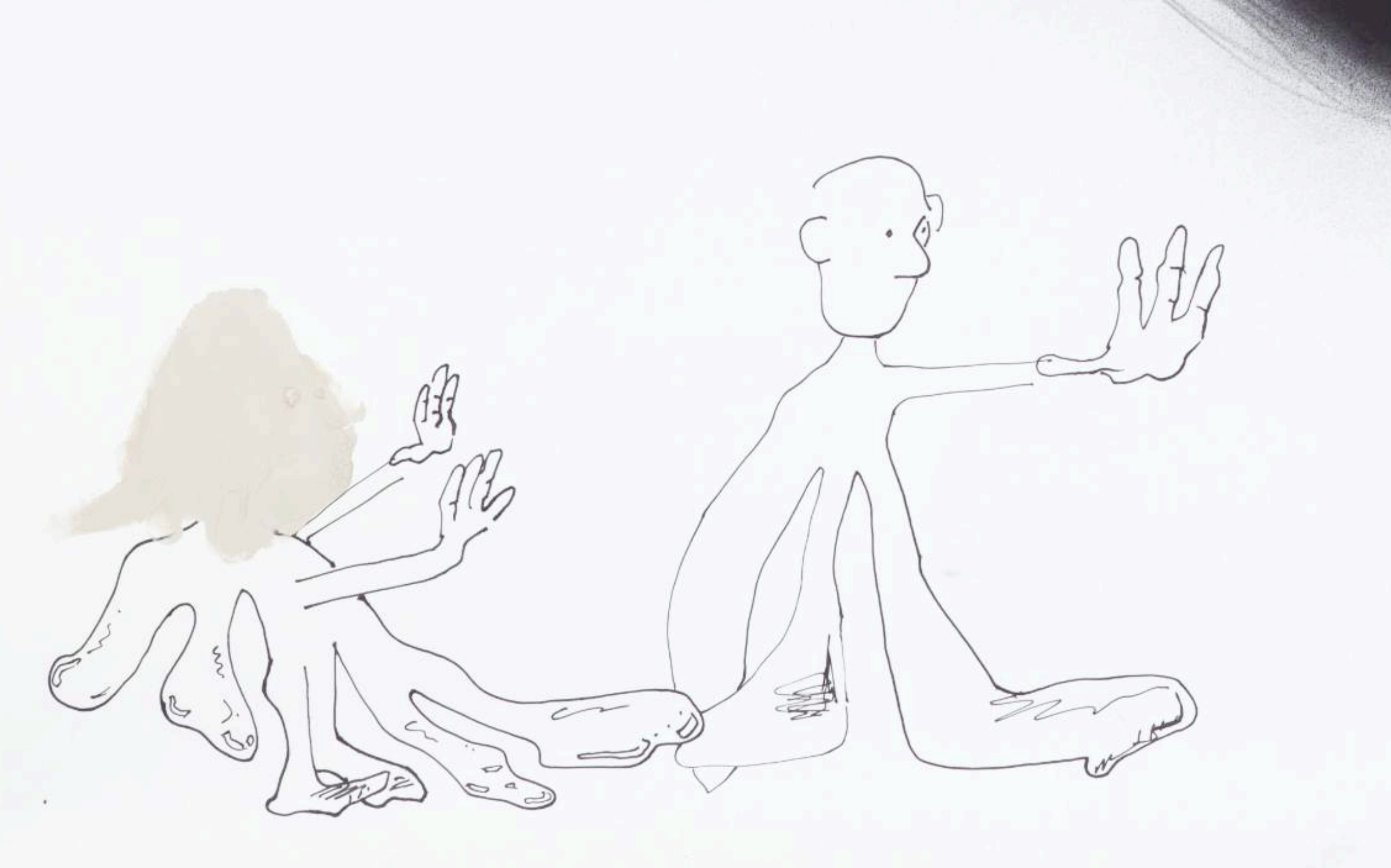
Not Speaking My Language

2013  
11" x 14"  
ink on polypropylene





Collisions Explain Everything  
2013  
40" x 27.5"  
spray paint, gouache, graphite, ink on paper



## Collisions Explain Everything

2013, 40" x 27.5", spray paint, gouache, graphite, ink on paper





Troll with a Pole

2013  
17" x 14"  
graphite on bristol board



Black Hole with Meaties

2013

30" x 20"

urethane alkyd enamel, spray paint, tape on paper





Mudman on the Ridge

2013

19" x 10"

graphite, spray paint, gouache on bristol board

Spill (Ghost)

2013  
12" x 14"  
gouache on bristol board

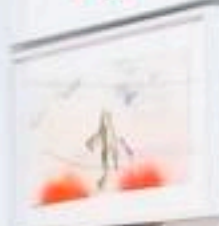






What It Is

2004  
8.5" x 11"  
ink and acrylic paint on paper







Meaty Beaty Installation, Aldrich Museum, 2013



Meaty Beaty Installation, Aldrich Museum, 2013





Meaty Beaty Installation, Aldrich Museum, 2013

# Autotelia

2013

55L x 42W x 69H

broom handles, wax, blue foam, pourable rigid foam, plastic shopping bags, urethane resin, spraypaint, latex paint, urethane alkyd gloss enamel

















## Autotelia

2013

55L x 42W x 69H

broom handles, wax, blue foam, pourable rigid foam, plastic shopping bags, urethane resin, spraypaint, latex paint, urethane alkyd gloss enamel



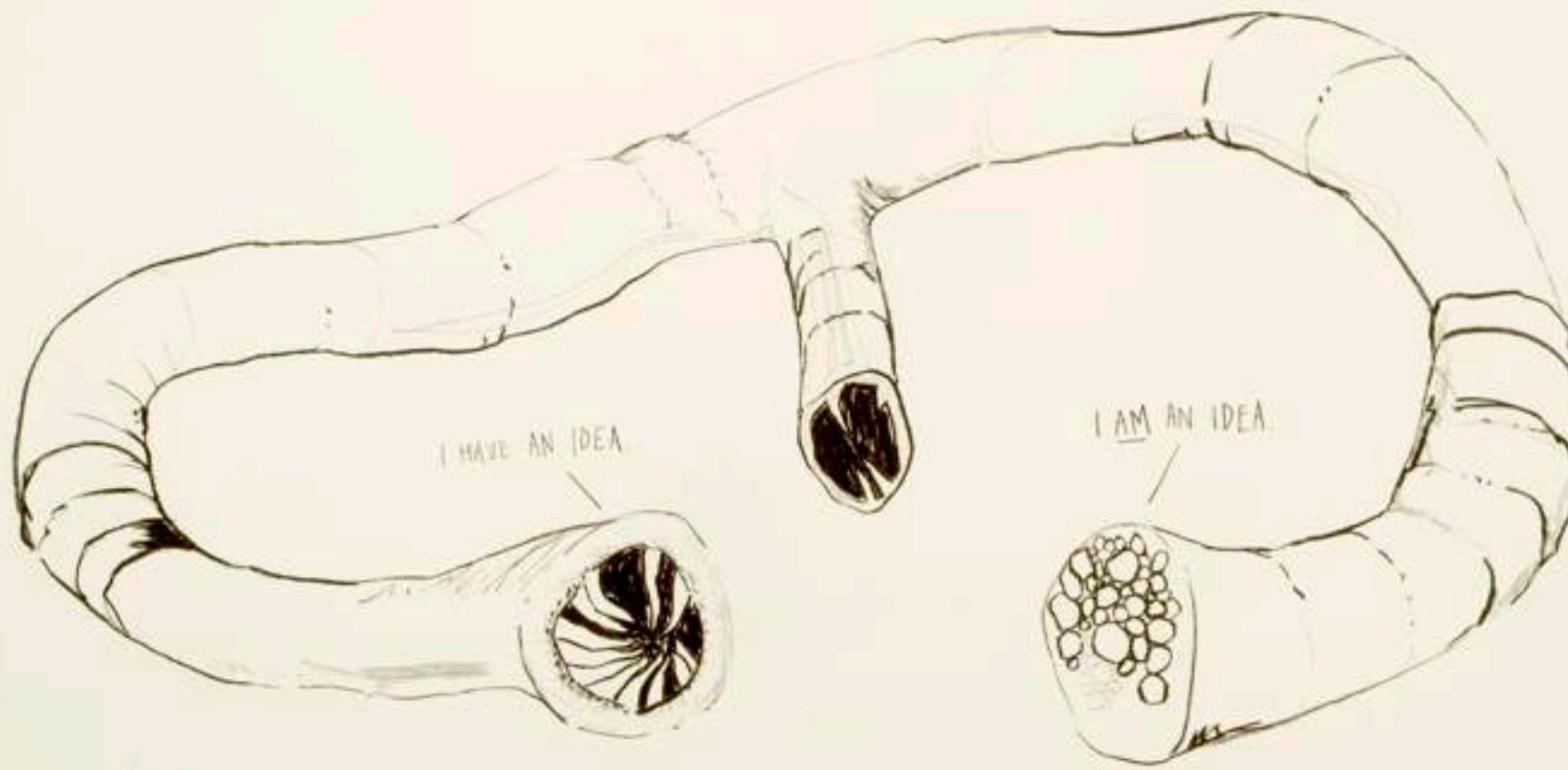










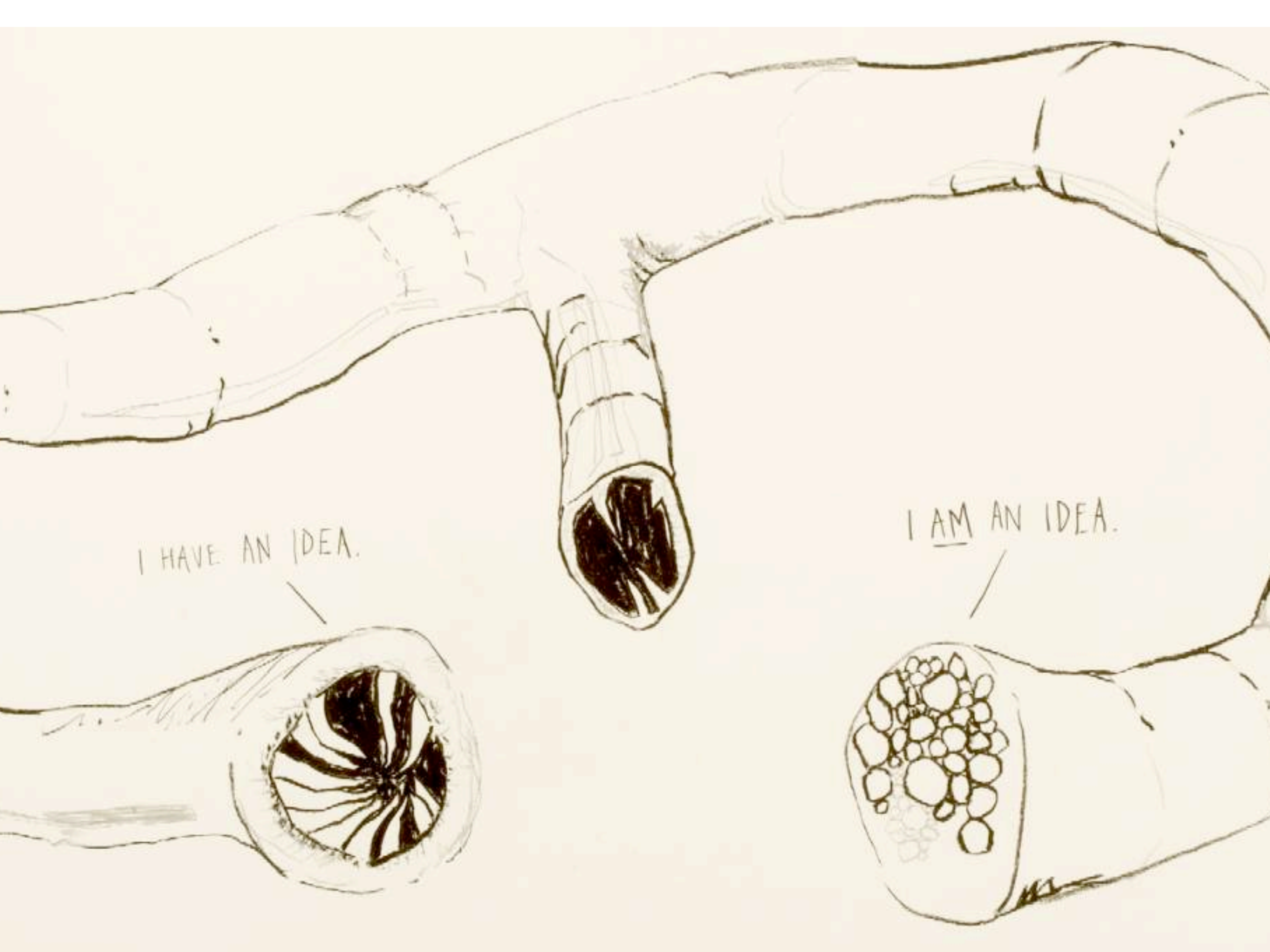


Idea

2013  
86" x 42"

charcoal, graphite, conte crayon on paper





I HAVE AN IDEA.

I AM AN IDEA.



Untitled Tube (I Roam/I Know)

2003  
18" x 23.5"  
ink on paper





Untitled (Tube)

2012  
12" x 9"  
ink on bristol board



Protuberance (Nutsack)

2013  
9" x 12"  
gouache, ink on bristol board





Unkillable (Still)  
Video, (Color, Sound)  
2011  
20:00 trt









MEATY BEATY BIG AND BOUNCY  
Installation View  
Aldrich Museum, Ridgefield, CT  
2013





THE ASS AND THE LAP DOG (2013)  
Video Still featuring Malene Dam  
Color Video/Sound  
33:45 trt

MEATY BEATY BIG AND BOUNCY  
Installation View  
Aldrich Museum, Ridgefield, CT  
2013



THE ASS AND THE LAP DOG (2013)  
Video Still featuring Malene Dam  
Color Video/Sound  
33:45 trt

MEATY BEATY BIG AND BOUNCY  
Installation View  
Aldrich Museum, Ridgefield, CT  
2013

